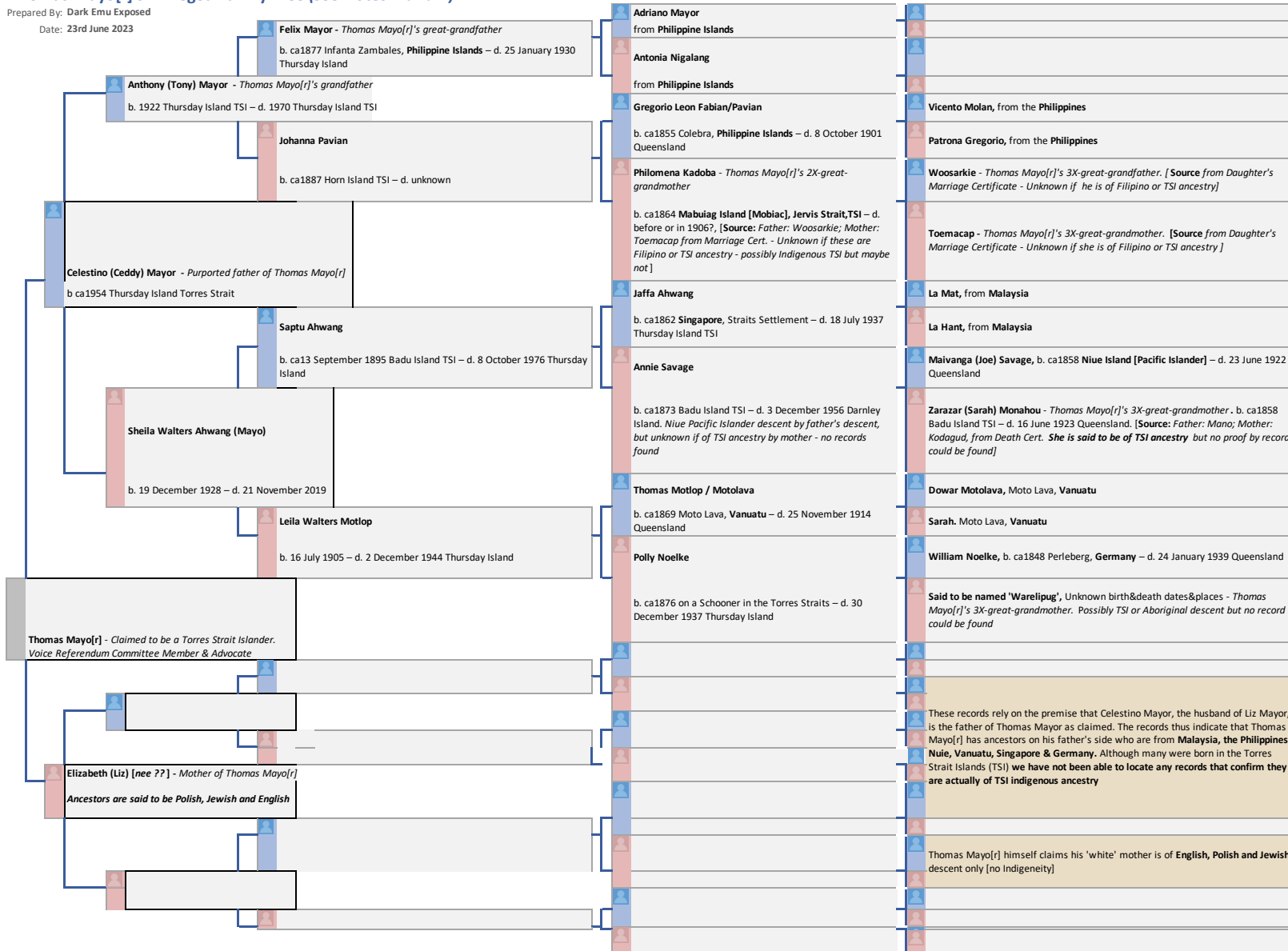


Thomas Mayo[r]'s - Alleged Family Tree (see Notes 1 and 2)

Prepared By: Dark Emu Exposed

Date: 23rd June 2023



Note 1 - This family tree has been constructed in good faith based on publicly available records and information from Thomas Mayo[r] himself and from other members of the Mayo[r] families. This Family Tree should be read in conjunction with the associated Research Notes

Note 2 - Disclaimer: This genealogical work has been undertaken in good faith and is based on the publicly available records. However, it cannot account for events which may result in Aboriginal or Torres Strait Islander (TSI) ancestry entering into the family line, such as via a private or unrecorded adoption of an Aboriginal or TSI child into the family, or a relationship out of wedlock between a family member and an Aboriginal or TSI person that produced a child of Aboriginal or TSI descent who was then incorporated into the family without record, or with a record that did not disclose the Aboriginality or TSI-descent of that child. This work relies on the claimed starting point of Thomas Mayo[r] himself that his father is Celestino Mayor.