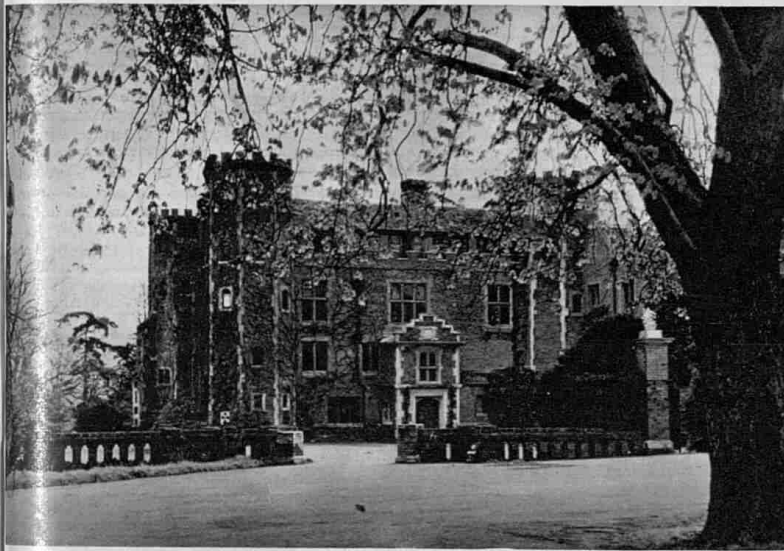




**SECURING THE FUTURE OF WICKHAM COURT**—A REAR VIEW OF THE FINE OLD HOUSE NEAR WEST WICKHAM WHICH IS TO BE MADE THE SUBJECT OF A PRESERVATION ORDER: Kent County Council have agreed in principle to the proposed drafting of the order after considering a report stating that the building has a number of features internally of considerable architectural interest.

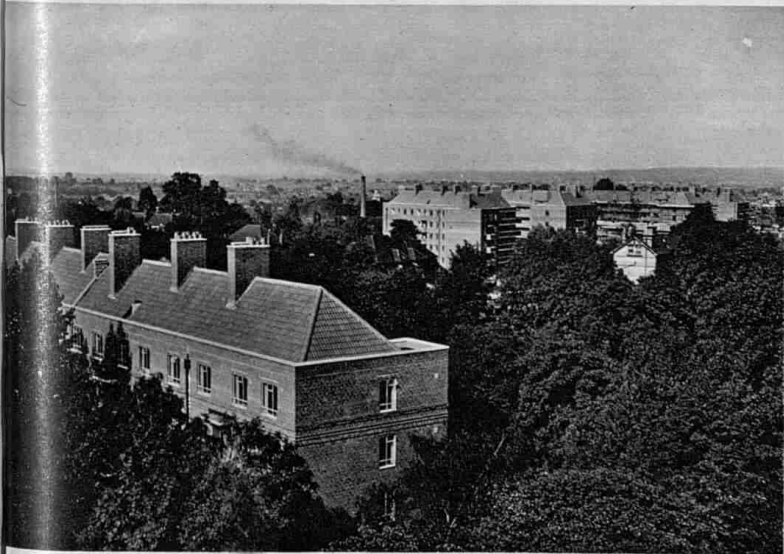
Wickham Court was built by Sir Henry Heydon about 1480 on the site of an ancient manor house. The Court is built in the form of a square with an octagonal tower at each corner. Originally the windows were placed only in the inner walls facing on to a central courtyard, but eventually the courtyard was roofed in and the present mullioned windows built into the outer walls where previously only weapon slits for defence appeared. Several additions were made to Wickham Court during the reign of Charles I, including the fine existing porchway with its massive oak nail-studded door. There are two secret tunnels, long since caved in, which ran from the Court, one westwards in the direction of Hayes and the other eastwards towards Addington. Sir Henry Heydon married Anne, daughter of Sir Geoffrey Boleyn and aunt of Anne Boleyn, wife of Henry VIII. After changing hands many times Wickham Court came into the possession of the Lennard family, who owned it for 300 years until the Court was sold in 1932 and was later modified for use as a hotel. In 1939 it was requisitioned by the War Office and has but recently been de-requisitioned.



**THE MAIN ENTRANCE TO WICKHAM COURT**: A view of the original portion of the building which is being made the subject of a preservation order. During the war it was at one time the headquarters of an anti-aircraft unit with batteries on Hayes Common



**ARTISTS FROM AUSTRALIA HAVE MADE THIS A HOME FROM HOME**: The Abbey, New Barnet, has been converted from a religious institution into an artist's colony and now has a fine array of studios



**NEW HOUSING ESTATE IN NORTH LONDON**: The first tenants are about to be chosen from a waiting list of over 170,000 applicants at County Hall, for this L.C.C. £2,000,000 housing colony at Woodberry Down, Stoke Newington. Originally the aim of the L.C.C. was to provide homes there for some thousands of overcrowded slum dwellers, but tenants will now be selected according to the proved urgency of their needs with regard to the usual priorities. Their homes will be in great blocks of flats. Two of the tallest eight-storey blocks are now nearing completion, and the Council has recently approved the erection of two similar blocks in monolithic concrete at a cost of £265,451. The rents of these new luxury flats inclusive of rates and water will be: one room, 12s. 9d.; two rooms, 17s. 10d.; three rooms, 21s. 3d. to 22s. 1d.; four rooms, 25s. 10d. to 26s. 4d.



**DEREK KING IN HIS STUDIO**: An artist from New South Wales putting the finishing touches to one of his pictures

**AN ABBEY ART COLONY**

Nearly two years ago William Ohly, an art connoisseur and the owner of a gallery, bought the Abbey at New Barnet, founding there an artist's colony where youthful painters and sculptors—mostly Australians—now work, eat, sleep and paint. Some of the work being achieved at the Abbey is of a high standard, and Derek King, of Sydney, is one of its most promising artists. He has just left for Porquerelles, off the south coast of France, where he will spend a year engaged in painting